



Advocating, Educating and Setting Quality Standards

Mentoring Partnership of Minnesota

July 2015

In This Issue

[A Special Thanks](#)

[New Workbook for Youth](#)

[New Faces](#)

[Sondra Samuels on Mentoring](#)

[Webinar: Mentor Recruitment](#)

A Special Thanks to MPM's Friends for Their Recent Gifts

- The Carlson Family Foundation
- Mortenson Construction

Mentoring Resource: Explore Responsibility with New Workbook for Youth

Responsible Publishing has developed a series of journal-based workbooks designed to encourage responsible decision-making. Education administrators, program directors, and volunteers have used the workbooks in a variety of different youth programs.

These workbooks strive to start a conversation or create an icebreaker which will lead to communication and reflection with a mentor. They allow the youth

New Faces at MPM

Dear Friends,

The Mentoring Partnership of Minnesota staff hope you all are having a wonderful summer! For many programs, summer is a critical time for providing programming since young people have more discretionary time. As your statewide support system, we value your work and are here to support your staff and programs.

Our organization has a few new faces, and we are excited to introduce our new staff to you. Please feel free to reach out to them as they will be doing the same to get to know you and your programs. Have a wonderful summer!



Nicki Patnaude

Development & Program Support Coordinator

[Contact Nicki](#) about possible joint grant opportunities.

to reflect on various aspects of responsibility and get to practice making responsible choices. With enough practice, this will become habit. Over time habit will become ingrained and will shape their real life decision making.

They will be in the Twin Cities area in the near future if you would like to set up a meeting with them to learn more. Please visit www.responsiblepublishing.com or call 1-877-331-0460 for more information.

Training Calendar

For a schedule of all MPM trainings and events, check out the [MPM Event Calendar](#). It also lists trainings from other great organizations like MENTOR, MAVA, MNYWI, HandsOn Twin Cities, YIPA and more.

Training Institute

To learn more about the Training Institute's resources and services, or to schedule a consultation, contact us at (612) 399-0239 or email maria@mpmn.org.

[Read more....](#)

Let's Keep in Touch

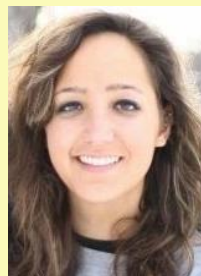


If your organization recently moved or you've had staff transition(s), please help us keep our database current by emailing us your updates at mentor@mpmn.org. Thank you!

[Pledge](#)



Carolyn Scherer
Director of Program Services
[Contact Carolyn](#) about your program's needs and technical assistance.



Wendy Raymond
Communications & Project Associate
[Contact Wendy](#) about marketing, communications, and events.

The Mentoring 365 Project: Growing Through Mentoring

Sondra Samuels has proved to be one of the leaders in supporting mentoring on a local and national level. As the President and CEO of [Northside Achievement Zone \(NAZ\)](#) she has worked to ensure our youth are provided with the essential guidance that will foster their healthy development. Through her work she has touched the lives of many youth and continues to promote quality mentoring through NAZ.



[In our next Mentoring 365 feature, read about Sondra's experience as a mentor, her thoughts on the state of mentoring and how we can continue to provide the best mentoring experience for our youth.](#)

Do you have an uplifting story to share? Help MPM to continue the celebration by [emailing us](#) your mentoring experience today!

 [Join Our Mailing List](#)

 [Send to a Colleague](#)



***FREE!* Collaborative Mentoring Webinar Series: Innovative Recruitment: Creative Strategies for Finding Long-Term Mentors**

Date: Thursday, July 16, 2015

Time: 12:00 - 1:15 p.m. CST (1:00 - 2:15 p.m. EST, 11:00 a.m. - 12:15 p.m. MST, 10:00 - 11:15 a.m. PST)

Cost: FREE

One of the biggest challenges faced by mentoring programs is mentor recruitment. How do you get both the right number and the right fit? Join this webinar as we explore new insights on this common challenge! Speakers will include Lisa Bottomley, Senior Mentoring Specialist at Michigan State University Extension, and Jayne Cravens, founder of Coyote Communications and consultant to Volunteer Match.

[Read & Register....](#)

Mentoring Partnership of MN
615 First Ave. NE, Ste. 125
Minneapolis, Minnesota 55413
mentor@mpmn.org
(612) 399-0222